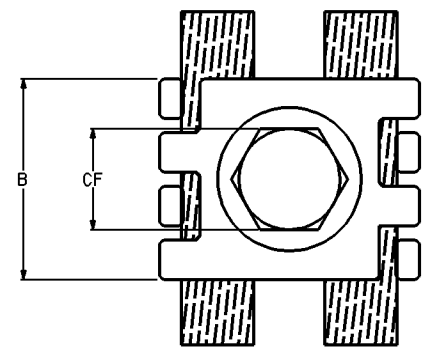
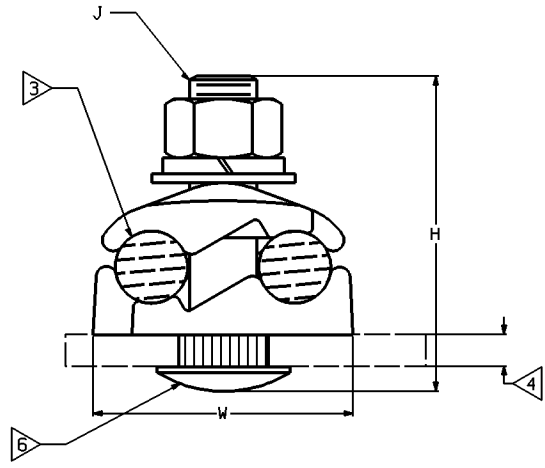
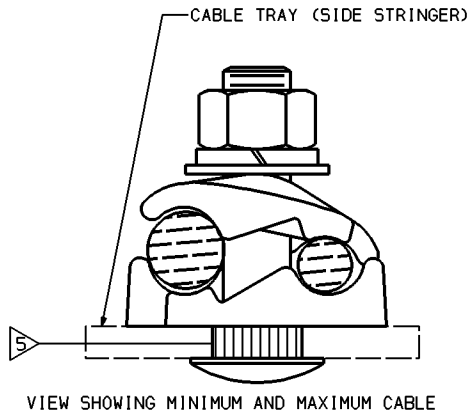


DRAWING NO. SC82752		7	6	5	4	3	2	1	
CU. OR ALUM. CONDUCTORS ACCOMMODATED		CAT NO.	B	CF	H	J	W	RECOMMENDED TRAY NOM. HOLE DIA.	TORQUE Lbs*in [N*m]
AWG	METRIC WIRE SIZE								
#2 SOL (.258) - 2/0 STR (.438)	35mm ² STR [7.62] - 50mm ² STR [9.27]	GC2626CT	1.12 [28.5]	.56 [14.2]	1.95 [49.5]	3/8" -16	1.70 [43.2]	.44	240 [27]
2/0 STR (.414) - 250 kcmil (.575)	70mm ² STR [10.9] - 120mm ² STR [14.4]	GC2929CT	1.12 [28.5]	.56 [14.2]	2.20 [55.9]	3/8" -16	1.98 [50.3]		
#6 SOL (.162) - 1/0 STR (.372)	16mm ² STR [5.13] - 50mm ² STR [9.27]	GC2525CT	1.12 [28.5]	.56 [14.2]	1.95 [49.5]	3/8" -16	1.45 [36.8]		

REV.	DATE	DESCRIPTION	BY	C.K.D.
3	7/14/94	REVISION TO CAD, ADD METRIC DIMENSIONS ADD 9.4" AND 16.0" DIMENSIONS FOR 1990.	RDP	KFM



NOTES:

- MATERIAL: CAST COPPER ALLOY.
GALVANIZED STEEL (BOLT, NUT & WASHER)
- FINISH: TIN PLATED.
- CONNECTORS ACCOMMODATE EITHER ONE OR TWO CONDUCTORS IN THE RANGE SPECIFIED.
PENETROX NOTE: (FOR ALUMINUM CONDUCTORS ONLY)
SCRATCH BRUSH CONDUCTOR ONLY THEN APPLY PENETROX 'A'. PENETROX 'A' CAN BE PURCHASED FROM BURNDY CORP. IN CANS OR PLASTIC SQUEEZE BOTTLES.
- ACCOMMODATES WALL THICKNESS OF .125 MAX.
- TO PREVENT ROTATION DURING INSTALLATION, RIBBED NECK BOLT MUST BE DRIVEN INTO A .44 DIA. HOLE FROM INSIDE OF TRAY PRIOR TO INSTALLING CONNECTOR.
- LOW PROFILE BOLT HEAD WITH NO.4 PHILLIPS RECESSED DRIVE MUST BE INSTALLED ON INSIDE WALL TO PREVENT DAMAGE TO CABLE INSULATION.
- DIMENSIONS IN BRACKETS [] ARE IN MILLIMETERS ROUNDED OFF TO THE NEAREST MILLIMETER, UNLESS OTHERWISE NOTED, AND ARE FOR REFERENCE ONLY.

CABLE TRAY GROUND CLAMP			
CAT NO: GC--CT (TABLE)	SCALE	EQU. 3/12E	
DRAWN: HCZ	2/8/79	CHECKED: HC	2/8/79
DESIGN APPL: GZ	2/20/79	MFG APPL: N/A	
D.A. APPL: A LLOYD	12/3/93	METO APPL: E WOO	12/2/93
CAD FILE: SC82752-SHT01	PH REF: N/A	MDL REF: N/A	
PROJECT: D. O. 38576		DRAWING NO. REV	
BURNDY on FCI Company		SC82752	
U.S. ELECTRICAL DIVISION MANCHESTER, NH 03106		SHEET 1 OF 1	

REV. 11.1991