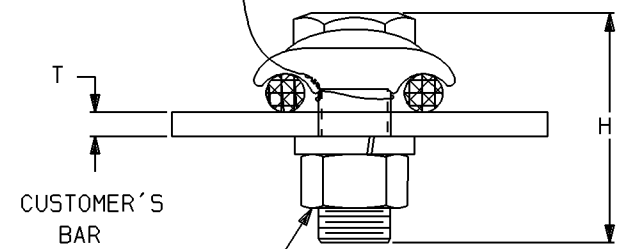
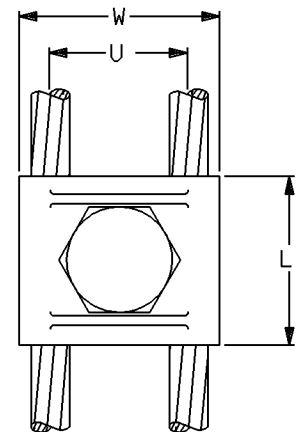
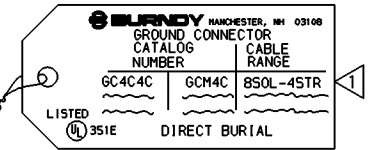



CATALOG NO.	COMMERCIAL COPPER CABLE	METRIC COPPER CABLE	H	J DIA.	L	U	W	T	TORQUE	
									Lb*in	N*m
GCM4C	850L (.129) - 4STR (.232)	10mm ² SOL [3.58] - 16mm ² STR [5.13]	1.36 [35]	3/8-16	.88 [22]	.72 [18]	1.04 [26]	1/4" [6]	240	27.0
GCM26	450L (.204) - 2/0STR (.418)	25mm ² STR [6.48] - 70mm ² STR [10.9]	1.74 [44]	3/8-16	1.00 [25]	.92 [23]	1.36 [35]			
GCM29	2/050L (.365) - 250kcmil (.575)	70mm ² STR [10.9] - 120mm ² STR [14.4]	2.07 [53]	1/2-13	1.25 [32]	1.19 [30]	1.90 [48]			
GCM34	300kcmil (.630) - 500kcmil (.814)	150mm ² STR [16.0] - 240mm ² STR [20.3]	2.57 [65]	1/2-13	1.62 [41]	1.43 [36]	2.44 [62]		480	54.1

REV.	DATE	DESCRIPTION	BY	C'K'D.
3	7/6/94	REDRAWN TO CAD. ADDED NOTE 4, T WAS .25 (PCN 1846 & 1556)	JPG	KM



"J DIA." SILICON BRONZE HEX. HEAD BOLT, HEX. NUT, AND SPLIT LOCKWASHER

- 1 UL 467 LISTED, FILE NO. E9999. SUITABLE FOR DIRECT BURIAL IN CONCRETE OR GROUND.
- 2. DIMENSIONS IN BRACKETS [] ARE IN MILLIMETERS ROUNDED OFF TO THE NEAREST MILLIMETER, UNLESS OTHERWISE NOTED, AND ARE FOR REFERENCE ONLY.
- 3. MATERIAL: CAST COPPER ALLOY.
- 4 FOR BAR THICKNESSES FROM 1/4" TO 1/2" ADD THE SUFFIX "T4" TO THE CATALOG NUMBER.
FOR BAR THICKNESSES FROM 1/2" TO 1" ADD THE SUFFIX "T8" TO THE CATALOG NUMBER.

GROUND CONNECTOR			
CAT NO: GCM-	(TABLE)	SCALE	N/A
DRAWN: H. C.	9-16-85	CHECKED: CAR	9-25-85
DSGN APPVL: G DITROIA	11/11/93	MFG APPVL: N/A	
Q.A. APPVL: A LLOYD	12/3/93	MKTG APPVL: K WOO	12/2/93
CAD FILE: SC91660-SHT01	PM REF: N/A	MDL REF: N/A	PROJECT: .
 an FCI Company U.S. ELECTRICAL DIVISION MANCHESTER, NH 03108		DRAWING NO.	REV
		SC91660	3
		SHEET 1	OF 1

REV: 111991