

| CATALOG NUMBER | FIG. NO. | CONDUCTOR RANGE ALUMINUM OR COPPER | BOLT HOLE SIZE | DIMENSIONS | | | | | | | | RECOMMENDED TIGHTENING TORQUE, IN. LBS N.M |
|----------------|----------|------------------------------------|----------------|--------------|--------------|--------------|--------------|-------------|---------------|-------------|-------------|--|
| | | | | C MAX. | D | E | H MAX. | K DIA | L | N | T | |
| K11A30U | 1 | TWO: 6 STR. - 300 kcmil | 5/16" | 1.02 [26] | .94 [24] | ---- | 2.02 [51] | .33 [8] | 3.00 [76] | .47 [12] | .31 [8] | 275 (31) |
| K11A34U-2 | 2 | TWO: 4/0 STR. - 500 kcmil | 1/4" | 1.45 [37] | 2.31 [59] | .69 [18] | 2.40 [61] | .28 [7] | 2.91 [74] | .25 [6] | .75 [19] | 375 (42) |
| K11A36U-2 | 3 | TWO: 2 STR. - 600 kcmil | 3/8" | 1.52 [39] | 2.31 [59] | 1.38 [35] | 3.02 [77] | .40 [10] | 4.91 [125] | .38 [10] | .75 [19] | 375 (42) |
| K11A39U-2 | 3 | TWO: 1/0 STR. - 750 kcmil | 3/8" | 1.70 [43] | 2.31 [59] | 1.38 [35] | 3.01 [76] | .40 [10] | 4.91 [125] | .38 [10] | .75 [19] | 375 (42) |
| K21A36U-2 | 4 | THREE: 2 STR. - 600 kcmil | 3/8" | 2.51 [64] | 2.31 [59] | 1.38 [35] | 3.01 [76] | .40 [10] | 4.91 [125] | .38 [10] | .75 [19] | 375 (42) |
| K22A36U-2 | 5 | FOUR: 2 STR. - 600 kcmil | 3/8" | 2.48 [63] | 2.31 [59] | 1.38 [35] | 3.02 [76] | .40 [10] | 4.91 [125] | .38 [10] | .75 [19] | 375 (42) |
| K22A39U-2 | 5 | FOUR: 1/0 STR. - 750 kcmil | 3/8" | 2.86 [73] | 2.31 [59] | 1.38 [35] | 3.02 [77] | .40 [10] | 4.91 [125] | .38 [10] | .75 [19] | 375 (42) |

| REV. | DATE | DESCRIPTION | BY | C.K'D. |
|------|---------|------------------|----|--------|
| 0 | 4/11/97 | DRAWING RELEASED | PL | JLM |

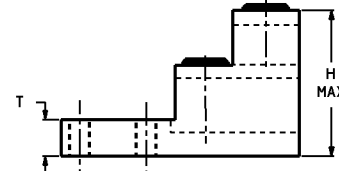
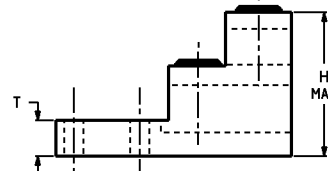
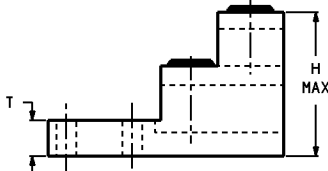
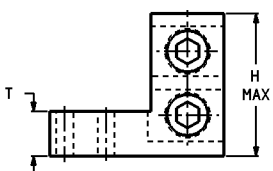
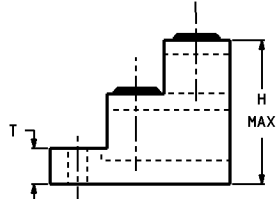
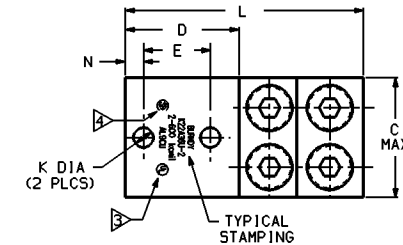
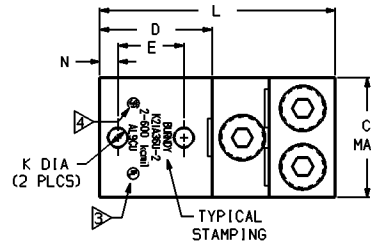
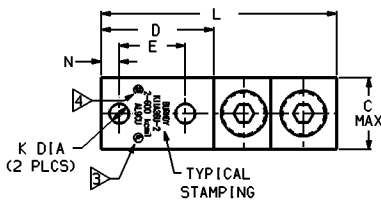
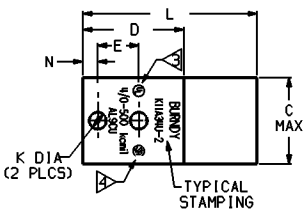
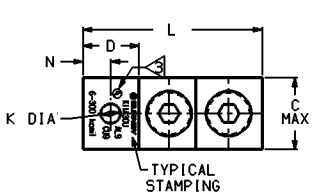


FIG. 1

FIG. 2

FIG. 3

FIG. 4

FIG. 5

NOTES:

- MATERIAL-BODY: ALUMINUM
SCREW: ALUMINUM
- FINISH-BODY: TIN PLATED
SCREW: TIN PLATED
- CONNECTORS ARE UL LISTED TO UL486B FOR INDICATED CONDUCTOR RANGE.
- CONNECTORS ARE CSA CERTIFIED TO C22.2, NO. 65 FOR INDICATED CONDUCTOR RANGE.
- "N" INDICATES NEMA STANDARD STUD HOLES.
- LISTED TORQUE VALUES ARE FOR MAXIMUM CONDUCTOR SIZES ACCOMMODATED. CONSULT UL486 TABLES 7-4, 7-5, & 7-6 FOR SMALLER CONDUCTOR SIZES.
- THE K11A30U UNIVERSAL TERMINAL IS NOT CSA LISTED.
- DIMENSIONS IN BRACKETS [] ARE IN MILLIMETERS ROUNDED OFF TO THE NEAREST MILLIMETER, UNLESS OTHERWISE NOTED, AND ARE FOR REFERENCE ONLY.

| UNIVERSAL TERMINAL | | SCALE |
|---|-------------|---|
| CAT NO: K11A-U, K21A-U, K22A-U (SEE TABLE) | | N/A |
| DRW: P. LAPONTIS | 4/10/97 | CHECKED: J. MICHAUD |
| DESIGN APPVL: K. HELLO | 4/30/97 | MFG APPVL: |
| S.A. APPVL: D. VARIO | 5/1/97 | MKTG APPVL: P. WERTHMAN |
| CAD FILE: SE210997-SHT05 | PM REF: N/A | |
| FRAMTONE CONNECTORS USA INC. BURNBY ELECTRICAL MANCHESTER, NH 03108 U. S. A. 1-800-346-4176 | | MDL REF: N/A PROJECT: D.O. 53794 DRAWING NO. SE210997 SHEET 5 OF 5 |
| | | REV 0 |

REV. 06/1995