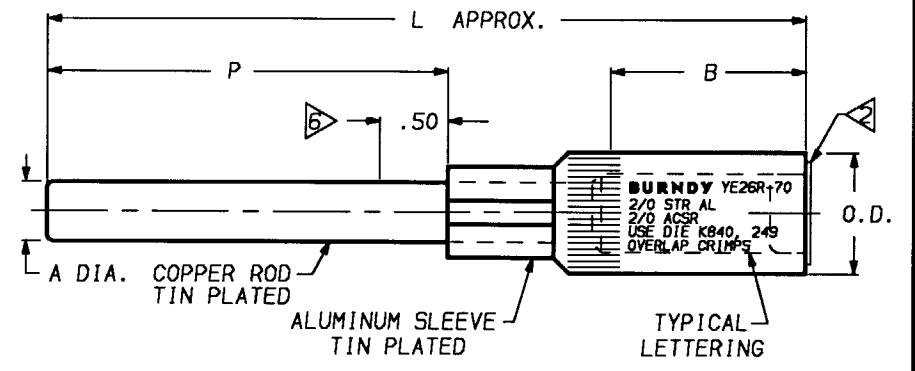


CATALOG NUMBER	ACCOMMODATES				A DIA.	B	L APPROX.	O.D.	P	TOOL INDEX NUMBER	INSTALLATION DATA					CAPLUG COLOR CODE		
	ALUMINUM		A.C.S.R.								HYTOOL™ & HYPRESS™ DIE SET OVERLAP CRIMPS							
	AWG, kcmil	STR	AWG, kcmil	STR							MD6	Y35/Y750	Y45/Y46<3	Y48BH	Y60BH			
YE6R-25	#6 (.184)	7	#6 (.198)	6-1	.204	.91	4.62	.65	2.50	BG 5/8-1 243 8A	FIXED W-BG W243	U-BG UK5/8-IT U243	U-BG UK5/8-IT U243	C243	L243	BLUE		
YE6R-40	#4 (.204)	1					6.12		4.00									
YE4R-25	#4 (.232)	7					4.62		2.50									
YE4R-30	#2 (.258)	1	#4 (.250)	6-1			5.12		3.00									
YE4R-40	#3 (.260)	7	#4 (.257)	7-1			6.12		4.00									
YE4R-60					.204		8.12		6.00									
YE2R-25	#1 (.328)	7	#2 (.316)	6-1	.250		4.62		2.50	840 249 11A	-----	UKB40T U249	UKB40T U249	C249	-----	RED		
YE2R-40	#2 (.292)	7	#2 (.325)	7-1		.91	6.12		4.00									
YE2R-70							9.12		7.00									
YE2R66	#1 SOL (.289) #2 (.292) #1 (.325)	7 7 7	#2 (.325)	6-1 7-1		1.88	9.50	.91	5.50									
YE25R-25					.250	.91	4.62	.65	2.50	BG 5/8-1 243 8A	FIXED W-BG W243	U-BG UK5/8-IT U243	U-BG UK5/8-IT U243	C243	L243	YELLOW		
YE25R-325									5.38									3.25
YE25R-40	1/0 (.368)	7	1/0 (.398)	6-1					6.12									4.00
YE25R-70									9.12									7.00
YE26R-40	2/0 (.414)	7	2/0 (.447)	6-1	.324	1.54	7.50	.91	4.00	840 249 11A	W-KB40 W249	U-KB40 U249	U-KB40 U249	C249	L249	GRAY		
YE26R-70	2/0 (.419)	19					10.50		7.00									
YE27R-40	3/0 (.464)	7	3/0 (.502)	6-1			7.50		4.00									
YE27R-55	3/0 (.470)	19					9.00		5.50									
YE27R-70					.324		10.50		7.00									
YE28R-30	4/0 (.522)	7	4/0 (.563)	6-1	.375		6.50		3.00	840 249 11A	W-KB40 W249	U-KB40 U249	U-KB40 U249	C249	L249	PINK		
YE28R-70	4/0 (.528)	19				1.54	10.50	.91	7.00									
YE30R-55	266.8 (.586)	7	266.8 (.642)	26-7	.460	2.15	10.16	1.25	5.50	317 705 1-1/8	-----	U317 U705 UK1-1/8-IT	U317 U705 UK1-1/8-IT	C317 C705	L317	BLUE		
YE30R-60	336.4 (.666)	19	266.8 (.608)	18-1			10.66		6.00									
YE32R-40	350 (.679) 350 (.681) 397.5 (.724) 400 (.728)	19 37 19 37	336.4 (.681) 336.4 (.721)	26-7 18-1	.460		8.50		4.00									
YE32R-70							11.66		7.00								GREEN	
YE361R-70	477 (.793) 477 (.795) 500 (.811) 500 (.813) 500 (.815)	19 37 19 37 61	397.5 (.783) 397.5 (.806) 477 (.814)	26-7 30-7 18-1	.560		11.66		7.00								PINK	
YE361R-120	500 (.813) 500 (.815)	37 61	477 (.814)	18-1	.560	2.15	16.66	1.25	12.00									

REV.	DATE	DESCRIPTION	BY	C'K'D.
27	11/6/98	ADDED CAT. #S YE2R-70, YE25R-70, YE26R-70, YE27R-70, YE28R-70, YE32R-70 & YE361R-70 (OPER ECO 4540)	PL	JLM
28	5/2/99	ADDED TRADE MARK SYMBOL (OPER ECO 4810)	PL	DB
29	8/30/99	ADDED CAT. #YE25R-40 TO TABLE & MOVED CAT. #YE36R-60 TO SHEET 2 (OPER ECO 5125)	PL	KH



NOTES:

- MATERIAL: AS NOTED.
- CONNECTOR SUPPLIED PREFILLED WITH PENETROX® & SEALED. PENETROX® IS COMPATIBLE WITH CABLE INSULATION.
- CATALOG # PT6515 ADAPTOR IS REQUIRED TO USE "U" DIES IN Y45 SERIES TOOLS. CATALOG # PUADP-1 ADAPTOR IS REQUIRED TO USE "U" DIES IN Y46 SERIES TOOLS.

- MULTIPLE CRIMP DIE SET MAKES MORE THAN ONE CRIMP PER TOOL COMPRESSION.
- SPACE CRIMPS.
- PLUG MAY BE BENT FOR INSTALLATION CONVENIENCE. IT IS RECOMMENDED THAT BENDING TAKE PLACE BEYOND THIS POINT.
- STANDARD O.D. HYPLUGS ONLY. (ALL DESIGNS)
- PLUGS COLOR CODED TO CONDUCTOR SIZE.

**HYPLUG™ CONNECTOR-ALUMINUM**

CAT NO: **YE-R (TABLE)** SCALE: NONE

DRAWN: EWB 12-21-67 CHECKED: MAP 1-23-68

DSGN APPVL: R MACDONALD 2-3-94 MFG APPVL: VIF 1-23-68

Q.A. APPVL: GHD 1-29-68 MKTG APPVL: D HAMILTON 2-15-64

CAD FILE: SE65168-01\_29 PM REF: N/A

MDL REF: N/A

FRAMATOME CONNECTORS USA INC. PROJECT: D032193

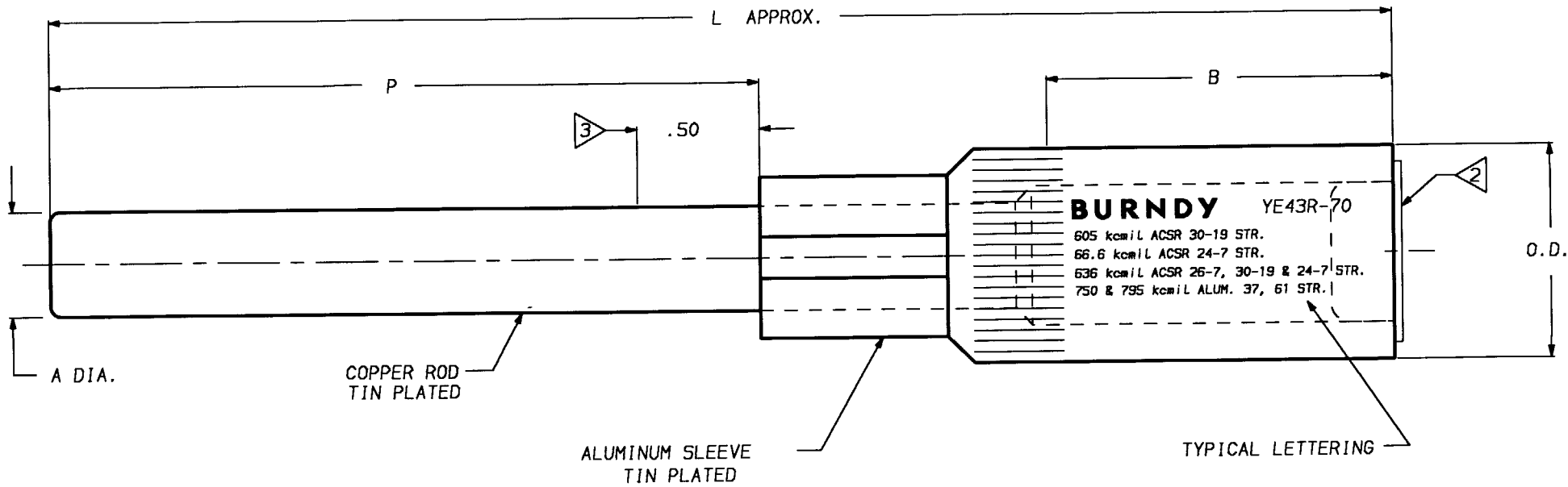
BURNDY ELECTRICAL DRAWING NO. REV

MANCHESTER, NH 03108 U.S.A. **SE65168** 29

1-800-346-4175 SHEET 1 OF 2

REV. 061995

SE65168	ACCOMMODATES				A DIA.	B	L APPROX.	O.D.	P	TOOL INDEX NUMBER	INSTALLATION DATA					CAPLUG COLOR CODE	REV.	DATE	DESCRIPTION	BY	C'K'D.
	ALUMINUM		A.C.S.R.								HYTOOL™ & HYPRESS™ DIE SET OVERLAP CRIMPS										
	AWG, kcmil	STR	AWG, kcmil	STR							MD6	Y35, Y750	Y45, Y46	Y48BH	Y60BH						
YE39R-60	-----	--	556.5 (.914) 556.5 (.927)	24-7 26-7	.625	2.56	11.98	1.50	6.00	6.08	-----	U608	U608	C608	L608	YELLOW	0	5/2/99	DRAWING RELEASED (PER ECO 4910)	PL	DB
YE43R-70	795 (1.028)	37 61	605 (.994) 636 (.977) 636 (.990) 636 (1.019) 666.6 (1.000)	30-19 24-7 26-7 30-19 24-7	.707	2.69	13.28	1.84	7.00	292	-----	-----	6 7 S292/P292	C292	L292	RED	1	8/31/99	ADDED CAT. #YE39R-60 FROM SHEET 1 TO SHEET 2 (PER ECO 5125)	PL	KH
YE48R-70	-----	--	900 (1.162) 954 (1.196) 1033.5 (1.213)	54-7 45-7	.793	3.47	14.10	2.12	7.00	575	-----	-----	-----	C575	L575	BROWN					



**NOTES:**

1. MATERIAL: AS NOTED.
2. CONNECTOR SUPPLIED PREFILLED WITH PENETROX® & SEALED. PENETROX® IS COMPATIBLE WITH CABLE INSULATION.
3. PLUG MAY BE BENT FOR INSTALLATION CONVENIENCE. IT IS RECOMMENDED THAT BENDING TAKE PLACE BEYOND THIS POINT.
4. STANDARD O.D. HYPLUGS™ ONLY. (ALL DESIGNS)
5. PLUGS COLOR CODED TO CONDUCTOR SIZE.
6. USED IN Y45 SERIES TOOLS. #PT6515 ADAPTOR NOT REQUIRED.
7. USED IN Y46 SERIES TOOLS. #PUADP-1 ADAPTOR NOT REQUIRED.

HYPLUG™ CONNECTOR-ALUMINUM		SCALE
CAT NO: YE-R (TABLE)		NTS
DRAWN: P LAPONIUS	5/2/99	CHECKED: .
DSGN APPVL: .		MFG APPVL: .
Q.A. APPVL: .		MKTG APPVL: N/A
CAD FILE: SE65168-02_1		PH REF: N/A
		MDL REF: N/A
FRAMATOME CONNECTORS USA INC. BURNDY ELECTRICAL		PROJECT: ECO 4910
MANCHESTER, NH 03108 U. S. A.		DRAWING NO. <b>SE65168</b>
1-800-346-4175		REV <b>1</b>
		SHEET 2 OF 2

REV. 06/19/95