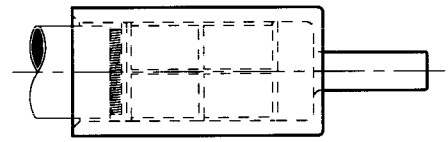
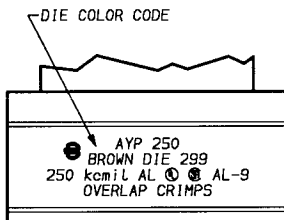
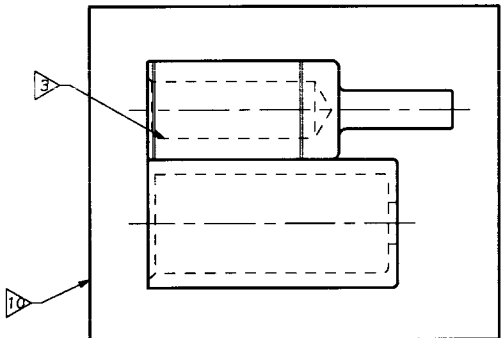


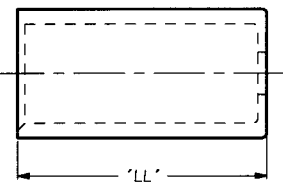
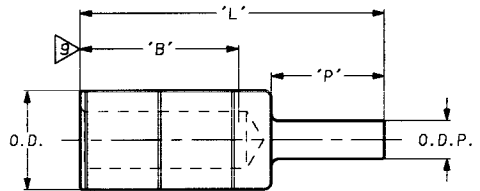
CATALOG NUMBER	ACCOMMODATES ALUMINUM CABLE CONCENTRIC, COMPACT, COMPRESSED	DIMENSIONS							INSTALLATION TOOLING (# CRIMPS)				DIELESS (# CRIMPS)	WIRE STRIP LENGTH	
		'B'	'LL'	'L'	'O.D.'	'ODP'	'P'	DIE INFORMATION		MECHANICAL TOOLING (# CRIMPS)		HYDRAULIC			
								COLOR CODE	DIE INDEX	MECHANICAL RATCHET MD6	Y34A				Y35, Y39 Y750, BAT35 BAT750
AYP6	#6 STR (.184 DIA) 7 STR	1.00 [25]	2.03 [52]	1.85 [47]	.60 [15]	.23 [6]	.68 [17]	TAN	296	W241 (2)	A25AR (1)	U25ART (1)	U25ART (1)	MECHANICAL: MY29-3 (1) OH25 (1)	1-1/16"
AYP4	#4 STR (.232 DIA) 7 STR	1.00 [25]	2.03 [52]	1.85 [47]	.60 [15]	.23 [6]	.68 [17]	TAN	296	W241 (2)	A25AR (1)	U25ART (1)	U25ART (1)		1-1/16"
AYP2	#2 STR (.292 DIA) 7 STR	1.00 [25]	2.03 [52]	1.85 [47]	.60 [15]	.23 [6]	.68 [17]	TAN	296	W241 (2)	A25AR (1)	U25ART (1)	U25ART (1)		1-1/16"
AYP1	#1 STR (.332 DIA) 19 STR	1.00 [25]	2.03 [52]	2.01 [51]	.60 [15]	.26 [7]	.84 [21]	TAN	296	W241 (2)	A25AR (1)	U25ART (1)	U25ART (1)		1-1/16"
AYP1/0	1/0 STR (.373 DIA) 19 STR	1.00 [25]	2.03 [52]	2.01 [51]	.60 [15]	.29 [7]	.84 [21]	TAN	296	W241 (2)	A25AR (1)	U25ART (1)	U25ART (1)		1-1/16"
AYP250	250 kcmil (.575 DIA) 37 STR	1.07 [27]	2.54 [65]	2.63 [67]	1.10 [28]	.47 [12]	1.22 [31]	BROWN	299	----	----	U31ART (2)	U31ART (2)	HYDRAULIC: Y644M (1) BAT644M (1)	1-1/8"
AYP350	350 kcmil (.681 DIA) 37 STR	1.07 [27]	2.54 [65]	2.75 [70]	1.10 [28]	.57 [14]	1.34 [34]	BROWN	299	----	----	U31ART (2)	U31ART (2)		1-1/8"
AYP500	500 kcmil (.813 DIA) 37 STR	1.07 [27]	2.81 [71]	3.08 [78]	1.31 [33]	.68 [17]	1.60 [41]	PINK	300	----	----	U34ART (4)	U34ART (4)		1-1/8"
AYP750	750 kcmil (.964 DIA) 61 STR 750 kcmil (.998 DIA) 61 STR	1.59 [40]	3.69 [94]	3.79 [96]	1.46 [37]	.81 [21]	1.76 [45]	YELLOW	936	----	----	U39ART-2 (3)	U39ART-2 (3)		1-3/4"



VIEW AFTER INSTALLATION



TYPICAL LETTERING VIEW CONNECTOR MARKING



NOTES:

- MATERIAL: CONNECTOR - ALUMINUM INSULATION COVER - E.P.D.M. (SEE 5A76839)
- FINISH: TIN PLATED (CONNECTOR ONLY)
- BARREL IS PARTIALLY FILLED WITH PENETROX® AND SEALED.
- SCRATCH BRUSHING OF ALL CONDUCTORS BEFORE MAKING INSTALLATION IS RECOMMENDED.
- INDEX 936 HEX GROOVE.
- CATALOG # PUADP-1 ADAPTOR IS REQUIRED TO USE "U" DIES IN Y46 SERIES TOOLS.
- OVERLAP CRIMPS.
- ONLY THE CONCENTRIC CABLE DIAMETERS ARE SHOWN.
- CONDUCTOR INSERTION LENGTH MINIMUM.
- PACKAGED IN CLEAR POLYBAG.
- DIMENSIONS IN BRACKETS [] ARE IN MILLIMETERS ROUNDED OFF TO THE NEAREST MILLIMETER, UNLESS OTHERWISE NOTED, AND ARE FOR REFERENCE ONLY.
- FOR USE BY CUSTOMERS THAT HAVE THIS HYPRESS.™ NO NEW Y34A HYPRESS™ TOOLS ARE BEING PROCESSED.

REV.	DATE	DESCRIPTION	BY	C'K'D.
15	7/30/99	CHANGED # OF CRIMPS FOR CAT. NO.S AYP500 & 700 PER (ECO 4843)	BM	PL
14	12/5/96	REDRAWN TO CAD AND UPDATED PER (PCN 3062)	JWA	JLM

WIRE CONNECTOR ACCESSORY COMPRESSION EQUIPMENT ADAPTOR

CAT NO: AYP-HYPLUG™ (TABLE)	SCALE: N/A
DRWNG: SDC	4/8/73/03/06/03/05
DESIGN APPVL: ELA	10/10/73/03/06/03/05
U.S.A. APPVL: D VARIO	11/26/96/03/05/06/03/05
CAD FILE: SD75496-01-15	REV REF: N/A
FRAMPTON CONNECTORS USA INC. BUNRY ELECTRICAL	
PROJECT: D.O. 35480	REV: N/A
DRAWING NO. SD75496	
MANCHESTER, NH 03108 U.S.A.	
1-800-348-4175	
SHEET 1 OF 1	REV 15

REV. 06/95