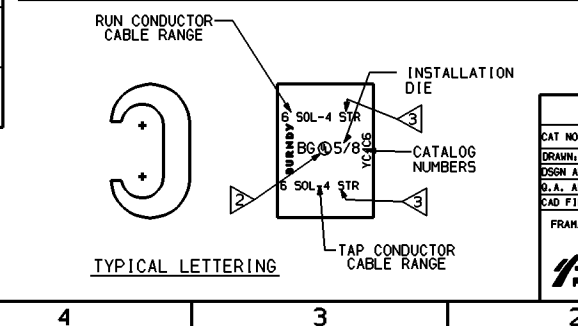
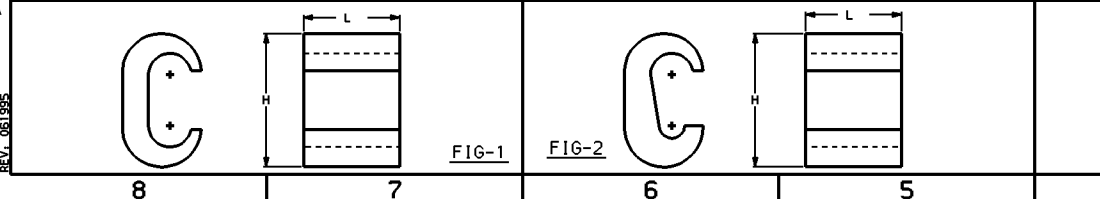
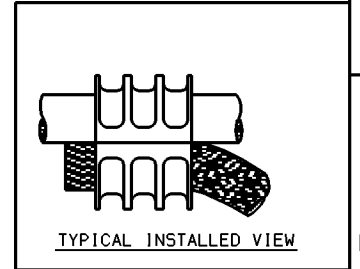


CATALOG NUMBERS	FIG NO.	COMMERCIAL COPPER CABLE RANGE		METRIC COPPER CABLE RANGE		"H"	"L"	INSTALLATION TOOLING						REV.	DATE	DESCRIPTION	BY C'K'D.
		RUN	TAP	RUN	TAP			MD6 HYTOOL TM		OURB40		Y35 HYPRESS TM					
								DIE INDEX NUMBER	DIE CATALOG NUMBER	NUMBER OF CRIMPS	NUMBER OF CRIMPS	DIE INDEX NUMBER	DIE CATALOG NUMBER				
YC10C10	1	#12 SOL (φ.081) TO #10 STR (φ.116)	#12 SOL (φ.081) TO #10 STR (φ.116)	[3.32] <sup>2</sup> (φ[2.06]) TO [6.82] <sup>2</sup> (φ[2.95])	[3.32] <sup>2</sup> (φ[2.06]) TO [6.82] <sup>2</sup> (φ[2.95])	.37 [9.41]	.32 [8.11]	238	162	1		238	U238	1			
YC8C8	1	#8 SOL (φ.129) TO #8 STR (φ.146)	#10 SOL (φ.102) TO #8 STR (φ.146)	[8.43] <sup>2</sup> (φ[3.28]) TO [10.80] <sup>2</sup> (φ[3.71])	[5.27] <sup>2</sup> (φ[2.59]) TO [10.80] <sup>2</sup> (φ[3.71])	.46 [12]	.50 [13]	162	162	2		162	U162	2			
YC4C8	2	#6 SOL (φ.162) TO #4 STR (φ.232)	#8 SOL (φ.129) TO #8 STR (φ.146)	[13.31] <sup>2</sup> (φ[4.11]) TO [21.11] <sup>2</sup> (φ[5.89])	[8.41] <sup>2</sup> (φ[3.24]) TO [8.41] <sup>2</sup> (φ[3.71])	.73 [19]	.62 [16]	B6 OR 5/8	B6	2		B6	U - B6	1	△		
YC4C6	2		#6 SOL (φ.162) TO #6 STR (φ.184)		[13.31] <sup>2</sup> (φ[4.11]) TO [13.21] <sup>2</sup> (φ[4.67])	.76 [19]	.62 [16]										
YC4C4	1	#4 SOL (φ.204) TO #2 STR (φ.320)	#6 SOL (φ.162) TO #4 STR (φ.232)	[13.21] <sup>2</sup> (φ[4.11]) TO [21.11] <sup>2</sup> (φ[5.89])	[13.21] <sup>2</sup> (φ[4.11]) TO [21.11] <sup>2</sup> (φ[5.89])	.81 [21]	.62 [16]		W - B6	1	△						
YC2C4	2		#8 SOL (φ.129) TO #2 STR (φ.320)	[21.11] <sup>2</sup> (φ[5.18]) TO [33.51] <sup>2</sup> (φ[8.13])	[8.41] <sup>2</sup> (φ[3.28]) TO [33.61] <sup>2</sup> (φ[6.55])	[8.41] <sup>2</sup> (φ[3.28]) TO [33.61] <sup>2</sup> (φ[6.55])	.98 [25]	.76 [19]	C	W - C	2		C	U - C	1	△	
YC2C2	1	#2 SOL (φ.258) TO #2 STR (φ.320)	#2 SOL (φ.258) TO #2 STR (φ.320)	[33.61] <sup>2</sup> (φ[6.55]) TO [33.51] <sup>2</sup> (φ[8.13])	[33.61] <sup>2</sup> (φ[6.55]) TO [33.51] <sup>2</sup> (φ[8.13])	1.05 [28]	.76 [20]										
YC26C2	2	1/0 STR (φ.373) TO	#8 SOL (φ.129) TO #2 STR (φ.320)	[53.31] <sup>2</sup> (φ[9.47]) TO [33.51] <sup>2</sup> (φ[8.13])	[8.41] <sup>2</sup> (φ[3.24]) TO [33.51] <sup>2</sup> (φ[8.13])	1.30 [33]	.92 [23]	--	--	--		E OR 0	U - E	3			
YC26C26	1	2/0 STR (φ.418)	1/0 STR (φ.373) TO 2/0 STR (φ.418)	[67.71] <sup>2</sup> (φ[10.62])	[53.31] <sup>2</sup> (φ[9.47]) TO [67.71] <sup>2</sup> (φ[10.62])	1.35 [34]	.92 [23]	--	--	--		0	U - 0	1			
YC28C2	2	3/0 STR (φ.470) TO 4/0 STR (φ.528)	#6 SOL (φ.162) TO #2 STR (φ.320)	[13.31] <sup>2</sup> (φ[4.11]) TO [33.51] <sup>2</sup> (φ[8.13])	[13.31] <sup>2</sup> (φ[4.11]) TO [13.31] <sup>2</sup> (φ[8.13])	1.65 [42]	1.07 [27]	--	--	--		F OR D3	U - F	3			
YC28C26	2		1/0 STR (φ.373) TO 2/0 STR (φ.418)		[53.31] <sup>2</sup> (φ[9.47]) TO [67.71] <sup>2</sup> (φ[10.62])	[53.31] <sup>2</sup> (φ[9.47]) TO [67.71] <sup>2</sup> (φ[10.62])	[53.31] <sup>2</sup> (φ[9.47]) TO [67.71] <sup>2</sup> (φ[10.62])	1.61 [41]	1.07 [27]	--	--	--			U - F	3	
YC28C28	1	3/0 STR (φ.470) TO 4/0 STR (φ.528)	3/0 STR (φ.470) TO 4/0 STR (φ.528)	[107.21] <sup>2</sup> (φ[13.41])	[85.21] <sup>2</sup> (φ[11.94]) TO [107.21] <sup>2</sup> (φ[13.41])	1.56 [40]	1.07 [27]	--	--	--			U - D3	1			

- NOTES:**
- △ TWO CRIMPS MADE SIMULTANEOUSLY WITH ONE CLOSING OF TOOL.
  - ▽ CONNECTOR NOT UL LISTED. LETTERING ON YC10C10 WILL NOT HAVE UL SYMBOL THE WORD "OR" WILL REPLACE IT.
  - △ WHEN MAX. AND MIN. CONDUCTOR NUMBERS ARE EQUIVALENT, THE MAX. CONDUCTOR NUMBERS NEED NOT BE SHOWN. BOTH NUMBERS WILL BE SHOWN IF THEY ARE NOT EQUIVALENT.
  - △ THESE CONNECTORS ARE LINED WITH PENETROX<sup>TM</sup> 54 SILICON IRON, A NON BERYLLIUM CONTAINING MATERIAL.
  - 5. DIMENSIONS IN BRACKETS [ ] ARE IN MILLIMETERS.
  - △ YC4C4 ACCEPTS EXPANDED TAP RANGE OF 6 SOL - 4 STR.
  - ▽ YC2C4 ACCEPTS EXPANDED RUN RANGE OF 4 SOL - 2 STR AND TAP RANGE OF 8 SOL - 2 SOL.

SELECTOR CHART		RUN CONDUCTOR													
TAP CONDUCTOR		[3.31] <sup>2</sup> SOL.	[6.81] <sup>2</sup> STR.	[8.41] <sup>2</sup> SOL.	[8.41] <sup>2</sup> STR.	[13.21] <sup>2</sup> SOL.	[13.21] <sup>2</sup> STR.	[21.11] <sup>2</sup> SOL.	[21.11] <sup>2</sup> STR.	[33.61] <sup>2</sup> SOL.	[33.61] <sup>2</sup> STR.	[53.31] <sup>2</sup> SOL.	[67.71] <sup>2</sup> STR.	[85.21] <sup>2</sup> SOL.	[107.21] <sup>2</sup> STR.
		#12 SOL.	#10 STR.	#8 SOL.	#8 STR.	#6 SOL.	#6 STR.	#4 SOL.	#4 STR.	#2 SOL.	#2 STR.	1/0 STR.	2/0 STR.	3/0 STR.	4/0 STR.
[3.31] <sup>2</sup> SOL.	#12 SOL.	YC10C10													
[5.31] <sup>2</sup> SOL.	#10 SOL.	YC10C10													
[6.81] <sup>2</sup> STR.	#10 STR.	YC10C10													
[8.41] <sup>2</sup> SOL.	#8 SOL.	YC8C8													
[8.41] <sup>2</sup> STR.	#8 STR.	YC8C8				YC4C8									
[13.21] <sup>2</sup> SOL.	#6 SOL.							YC2C4							
[13.21] <sup>2</sup> STR.	#6 STR.							YC2C4				YC26C2		YC28C2	
[21.11] <sup>2</sup> SOL.	#4 SOL.							YC4C4						YC26C2	
[21.11] <sup>2</sup> STR.	#4 STR.							YC4C4						YC26C2	
[33.61] <sup>2</sup> SOL.	#2 SOL.									YC2C2					
[33.51] <sup>2</sup> STR.	#2 STR.									YC2C2					
[53.31] <sup>2</sup> STR.	1/0 STR.											YC26C26		YC28C26	
[67.71] <sup>2</sup> STR.	2/0 STR.													YC28C26	
[85.21] <sup>2</sup> STR.	3/0 STR.													YC28C28	
[107.21] <sup>2</sup> STR.	4/0 STR.													YC28C28	

SELECTOR CHART		RUN CONDUCTOR				
TAP CONDUCTOR	SPECIAL CONDUCTOR COMBINATION	[26.6] <sup>2</sup> SOL.	[33.61] <sup>2</sup> SOL.	[33.51] <sup>2</sup> STR.	[53.31] <sup>2</sup> STR.	[67.71] <sup>2</sup> STR.
		#3 SOL.	#2 SOL.	#2 STR.	1/0 STR.	2/0 STR.
[5.31] <sup>2</sup> SOL.	#10 SOL.	YC4C8				
[6.81] <sup>2</sup> STR.	#10 STR.	YC4C8				
[8.41] <sup>2</sup> SOL.	#8 SOL.	YC4C8				
[8.41] <sup>2</sup> STR.	#8 STR.	YC4C8				
[13.21] <sup>2</sup> SOL.	#6 SOL.	YC4C6				
[13.21] <sup>2</sup> STR.	#6 STR.	YC4C6				
[21.11] <sup>2</sup> SOL.	#4 SOL.	YC2C4				
[21.11] <sup>2</sup> STR.	#4 STR.	YC2C4				
[26.61] <sup>2</sup> SOL.	#3 SOL.	YC2C2				



**COPPER CRIMPIT<sup>TM</sup>**

CAT NO: YC - C -

BRANN, H. CIELESZ 12-5-84 CHECKED: C.A.R. 12-10-84

ESSEN APPL. R.L. 12-11-84 MFG APPL. D. HAMILTON

G.A. APPL. D. VARIO 7-24-97 MFG APPL. N/A

CAD FILE: SE90670-SHT01 PM REF. N/A

FRAMATOME CONNECTORS USA INC. MDC REF. N/A

BURNDY ELECTRICAL PROJECT: D.O. 50505

MANCHESTER, NH 03108 DRAWING NO. **SE90670** REV **4**

U. S. A. SHEET 1 OF 1

1-800-346-4175

REV. 06/1995